

Integra 3™ Micromanipulator

Featuring Thermosafe™

Ultimate
thermal
control

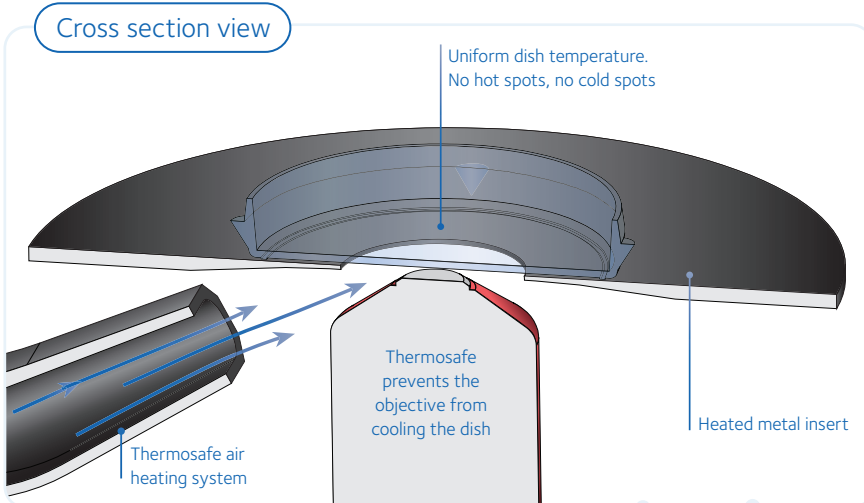
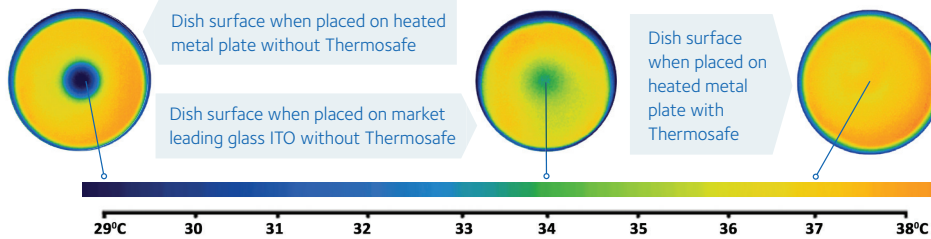


CooperSurgical®
Fertility Solutions

What is Thermosafe?

Every detail of the Integra 3 is geared towards one goal: creating the best possible conditions for ICSI and sample manipulation.

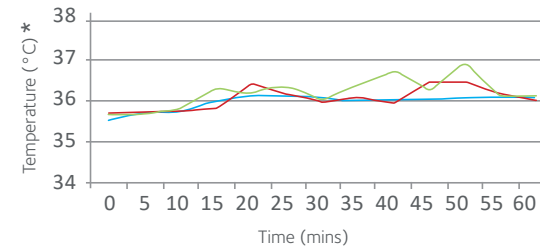
Put simply, this is an integrated heating system that helps to keep samples at the optimum temperature. It blows warm air, without vibration, towards the Petri dish precisely and uniformly. A visible and audible alarm will sound if temperature moves more than 0.5°C from the set point and a log is kept of every alarm triggered. The result of this is a fail-safe guarantee, with no more cold spots, no more hot spots and no more ambiguity.



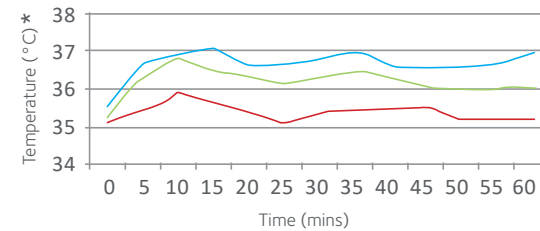
PAPER 1

Thermosafe Provides Optimum Temperature Control

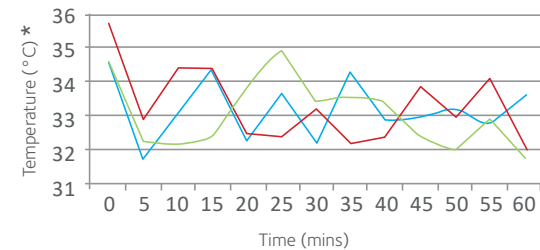
Can temperature stability be improved during micromanipulation procedures by introducing a novel air warming system (AWS)?



Heated Stage with Aperture & Thermosafe
Integra 3 2013 plus Thermosafe



Heated Stage with Glass Platform
Integra Ti 2011 plus ITO



Heated Stage with Aperture
Integra Ti 2011 plus WIS metal stage

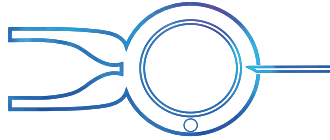
*Graphs show mean temperature readings over a 1 hour period — x 20 — x 40 — x 60

Conclusion

The Thermosafe AWS provides optimum temperature control during extended micromanipulation procedures such as ICSI, IMSI and embryo biopsy when compared to alternatives currently available.

To read the full poster on Thermosafe please visit fertility.coopersurgical.com
With thanks to Wheat, S., Vaughan, K. and Harbottle, S.J. (2014) for their permission to reprint.

Are you creating the best possible conditions for ICSI and sample manipulation?



- ICSI equipment can have an effect on embryo morphokinetic development.
 - Thermosafe prevents the cold metal objective from cooling the dish.



Use Thermosafe for ultimate thermal control

PAPER 2

Embryos injected using the Integra 3 were twice as likely to be transferred.

A prospective randomised sibling study to establish if the use of two different micromanipulator systems (Integra 3 versus Integra Ti, Research Instruments) had an effect on fertilisation outcome, embryo quality and morphokinetic parameters.

Embryos derived from oocytes injected using the Integra 3 had a longer second cell cycle (CC2), shorter second cell cycle synchrony (S2) and were twice as likely to be transferred compared to Integra Ti.

Conclusion

This study not only validates the Integra 3 as performing at least equal to the established Integra Ti system, but also demonstrates that ICSI equipment can have an effect on embryo morphokinetic development.

To read the full poster on Integra 3 versus Integra Ti please visit fertility.coopersurgical.com

With thanks to Gwinnett, D., Cook, C., Escriba, M., Hickman, C., Trew, G. and Lavery, S. (2014) for their permission to reprint.

© CooperSurgical, Inc. The trademarks used herein are the property of CooperSurgical, Inc. All rights reserved.
Order No. EQU_FLY_0001_US_US_V1 • Version 1 • October 13, 2021. All information correct at time of print.
Specifications are subject to change without notice or obligation on the part of the manufacturer.



CooperSurgical®

Fertility Solutions