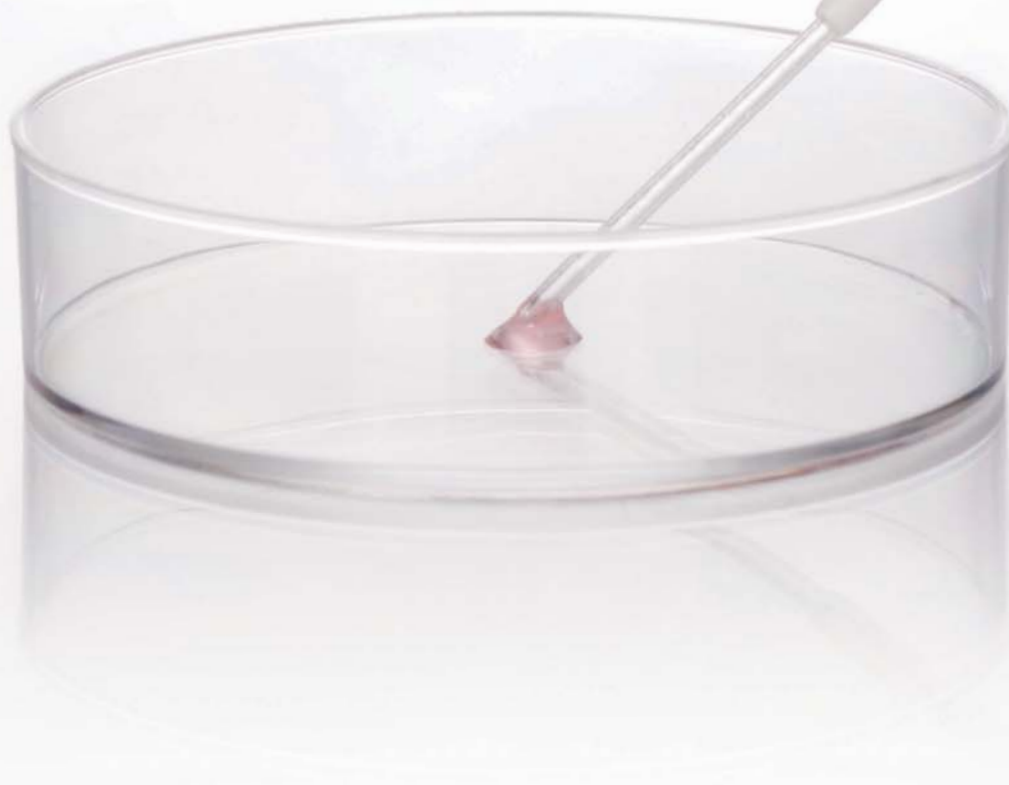


Needles & Catheters

From the beginning



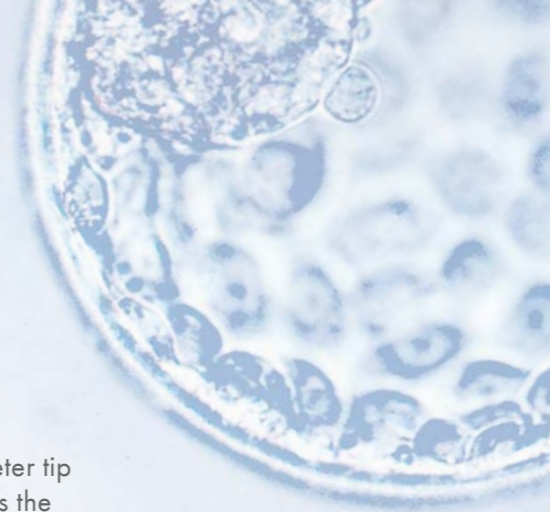
CooperSurgical®
Fertility Solutions

From the beginning

Over 40 years ago we worked with the pioneers of IVF to design the first Wallace® embryo transfer catheter. We believed that creating the softest method we could to place the embryo back into the uterus would give families the best chance of success.^{1, 5}

We have continued to work closely with IVF experts as our product range has evolved, and still maintain the original hand-crafted soft embryo catheter tip design. To this day we remain the catheter of choice for many clinics across the globe and are continually associated with the highest pregnancy rates.^{1, 5}

The Wallace range of oocyte recovery needles and embryo transfer catheters provide a comprehensive choice of products to suit varying clinical protocols.



Our company

The Wallace brand of embryo transfer catheters and oocyte recovery needles has become part of the CooperSurgical family. They now feature amongst the innovative products, solutions and services offered by CooperSurgical Companies for the complete IVF process.

Our quality

We understand the importance of providing customers with the highest quality devices, so we ensure MEA and LAL testing is carried out on all individual batches.

All our manufacturing sites are certified against the internationally recognized quality standards ISO9001:2015, ISO13485:2018 enabling us to apply the CE mark to our devices.



For references please see page 9

Evolution of the catheter

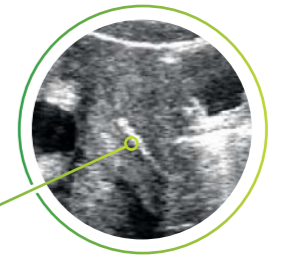
Classic catheter

Our Classic embryo transfer catheter has been used since IVF practice began. Its soft handcrafted inner lumen and formable outer sheath is associated with some of the highest pregnancy rates across the world.^{1, 5}



SureView® catheter

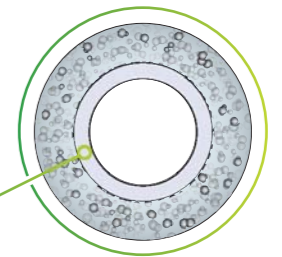
Using patented technology, Sureview is the first catheter of its kind, where the entire length of the catheter is visible from tip to hub under ultrasound guidance. Clinicians and Embryologists are witnessing a marked improvement in pregnancy rates when using ultrasound during embryo transfer procedures^{1-4, 6}
Ultrasound image of the SureView catheter within the uterus



SureView technology

The SureView catheter features the unique hand-crafted tip and smooth inner surface used for the Wallace Classic catheter.⁵

SureView cross section
(Bubbles shown are representation only)
Thickness of smooth inner layer is 0.14mm (+0.05)



Sure-Pro® catheter

The Sure-Pro and Sure-Pro Ultra embryo transfer catheters give added support and control when presented with a potentially difficult procedure. With several pack variations available, the catheter can be provided with both Classic and SureView inners, and with a malleable stylet or flexible obturator.



For references please see page 9

Wallace Classic

Soft embryo transfer catheters

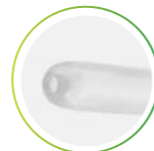
Our Classic range offers a soft-profiled tip associated with some of the highest pregnancy rates across the world.^{1,5}

Classic Embryo Transfer Catheter (18/23cm)



Key product benefits

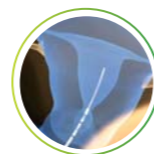
- Soft material and smooth tip designed to minimize trauma and maximize success rates.^{1,5}
- Formable outer sheath to suit different patient anatomies
- Centimeter markings to show outer sheath depth and inner lumen protrusion for confidence of placement within the uterus
- Trial transfer catheters allow for confident positioning of the outer sheath before introducing the embryo loaded inner. Clinicians have found this technique to have a positive impact on pregnancy rates.⁵
- The Classic range is fully compatible with the SureView range



Hand-crafted soft inner catheter



Smooth tip transition with outer sheath



Inner catheter position in uterus

Classic Trial Transfer Catheter (18/23cm)



Intermediate Embryo Transfer Catheter - stiffer than Classic (18cm/23cm)



Malleable Stylet - for difficult transfers (18cm/23cm)⁷



Wallace SureView

Ultrasound visible embryo transfer catheters

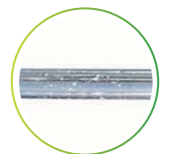
The unique SureView catheter allows full visibility under ultrasound guidance whilst incorporating the hand-craft tip of the widely successful Classic catheter. Ultrasound guided embryo transfer procedures have been recognized by many clinicians and embryologists to improve pregnancy rates.^{1-4,6}

SureView Embryo Transfer Catheter & Trial Transfer Catheter (18/23cm)

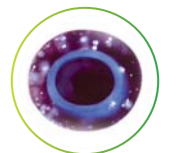


Key product benefits

- Visible under ultrasound from the hub to the tip of inner catheter
- More accuracy and confidence when positioning the catheter tip within the uterus for embryo transfer
- Combines benefits of the Classic range with Sureview patented technology
- Compatible with the Wallace Malleable Stylet for difficult transfers⁷
- The Sureview range is fully compatible with the Classic range



SureView micro bubbles are present throughout catheter length



Cross section illustrating micro bubbles and smooth internal lumen



SureView catheter shown within the uterus

SureView Embryo Transfer Catheter (18/23cm)



SureView Trial Transfer Catheter (18/23cm)



Wallace Sure-Pro Range

Supported embryo transfer catheters

The Sure-Pro range features the hand-crafted inner catheter tip of the Wallace Classic, with the added benefit of a supported inner catheter to improve control during handling.

Sure-Pro and Sure-Pro Ultra embryo transfer catheters feature a supported and soft-tipped inner catheter, utilizing the Wallace Classic design. You also have the option to use a soft obturator or a firm stylet to help navigate a pathway through the cervical canal, enabling the inner catheter to pass through the uterus.⁷



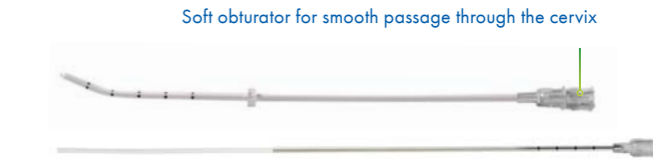
Sure-Pro Embryo Transfer Catheter



Sure-Pro Embryo Transfer Catheter with firm stylet PPS623 (23cm)



Sure-Pro Embryo Transfer Catheter with soft obturator PPB623 (23cm)



Key Product Benefits

- Supported inner catheter for increased control during handling and insertion
- Pre-formed curve on outer sheath to help navigate the cervical canal
- Adjustable silicone marker for depth guidance and tip orientation
- Available with a soft obturator and firm stylet to suit various techniques and patient anatomies
- Formable outer sheath allowing for accentuation or smoothing of the pre-formed curve

Sure-Pro Ultra configurations are designed to suit various techniques and clinical situations whilst offering the recognized benefits of a soft inner catheter and echogenic visibility.

The sterile triple pouch option allows clinicians to take the outer sheath and the obturator or stylet into the theatre, whilst the embryologist takes the inner catheter sterile pouch to the lab to prepare and load the embryo for transfer. Both products are also available with an additional pouch for aseptic technique, enabling sterility to be maintained from laboratory to theatre.



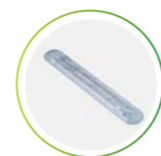
Soft hand-crafted tip to facilitate a smooth passage through the cervix¹⁻⁵



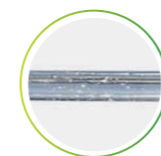
Pre-formed angle on outer sheath



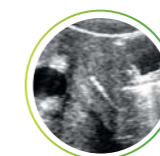
Supported Wallace Sure-Pro compared with Wallace Classic



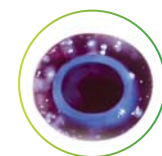
Sure-Pro supplied in a procedural tray to maintain sterility whilst handling



SureView micro bubbles are present throughout catheter length



SureView catheter shown within the uterus



Cross section illustrating micro bubbles and smooth internal lumen

Wallace Sure-Pro Ultra

Supported Ultrasound Visible Embryo Transfer Catheters

The Sure-Pro Ultra range features the unique echogenic properties of the SureView catheter whilst continuing to offer the recognized benefits of a soft, hand-crafted inner catheter tip.

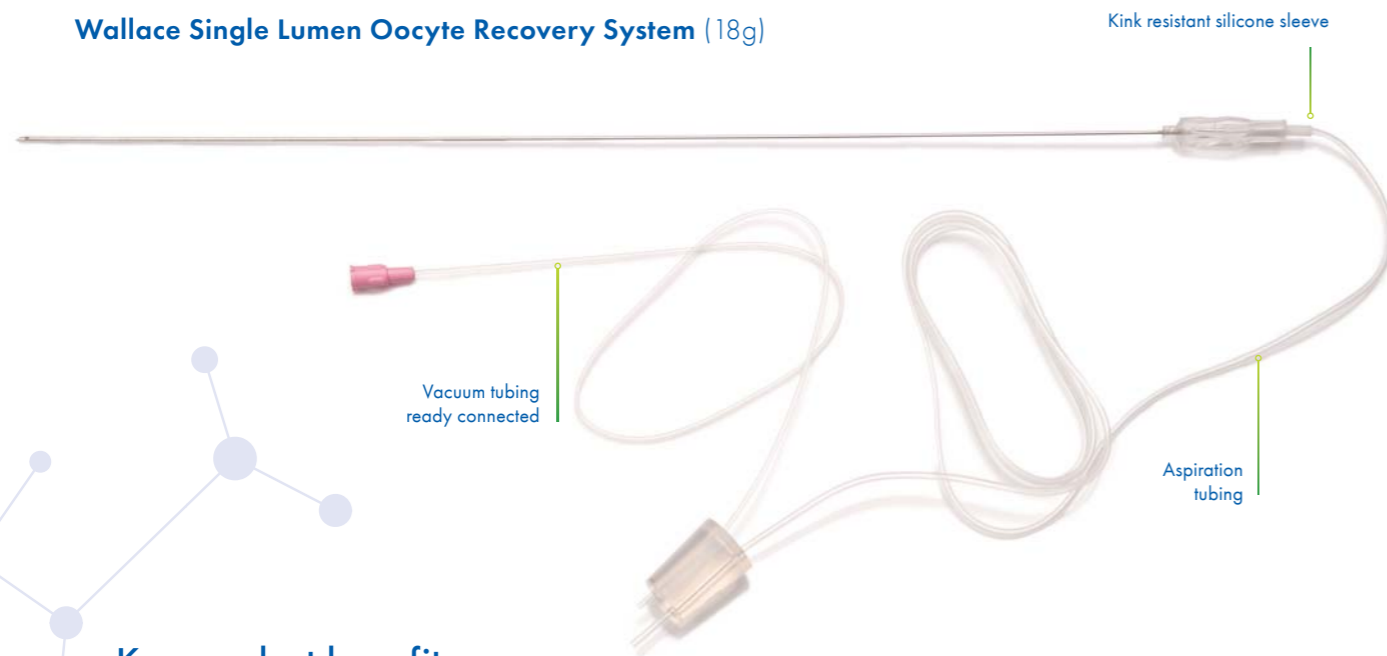


Wallace Single Lumen Oocyte

Recovery systems

The single lumen range features a tri-faceted tip design with echo markings right to the needle tip to guide placement within the ovary/follicle. The needle is available as a stand alone unit* and with a variety of tubing lengths to suit clinical preference.

Wallace Single Lumen Oocyte Recovery System (18g)



Key product benefits

- Sharp, non-coring needle tip
- Echo marked to the very tip to guide placement under ultrasound guidance
- Available with a luer lock connected at the bung for intermittent flushing of the follicle
- Silicone bung for an easy and secure fit with test tubes
- Color coded tubing sleeves: 16g = Blue, 17g = Red, 18g = White
- Needle Length: 33cm



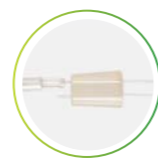
Triple ground needle tip for optimum sharpness



Echo markings at needle tip



Luer lock compatible connections

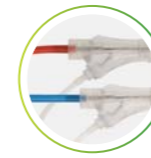


Available with luer lock at bung for intermittent flushing

Wallace Dual Lumen Oocyte

Recovery systems

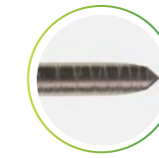
Our dual lumen oocyte aspiration needle range features a fully integrated flushing line running from hub to needle tip.



Available in 16g and 17g with color coded sleeves



Orientation marker to identify needle bevel



Echo markings at needle tip



Flushing lumen extends to needle tip

Key product benefits

- Flushing lumen extends to needle tip providing a consistent flow rate
- Non-coring needle tip to minimize the risk of blockages
- Triple ground needle tip for optimum sharpness
- The oocyte retrieval needle is echo marked to the very tip for accurate placement under ultrasound guidance
- Silicone bung for an easy and secure fit with test tubes
- Allows for continual or intermittent flushing during oocyte recovery
- Colour coded tubing sleeves: 16g = Blue, 17g = Red
- Needle Length: 33cm
- Pump adaptor

Wallace Dual Lumen Oocyte Recovery System (16g)



Cross section of dual lumen needle

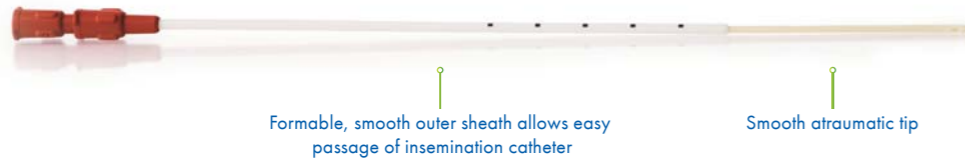
Flushing lumen		Aspiration lumen	
Gauge	Equivalent flow diameter	Gauge	Equivalent flow diameter
16g	1.17mm	16g	1.17mm
17g	0.9mm	17g	0.9mm

Wallace Intrauterine

Insemination catheters

The Wallace IUI catheter is a premium quality device featuring a smooth tip and formable outer sheath for optimal control over placement within the uterus. The two-piece design replicates the Wallace Classic catheter, which is also suitable for training embryo transfer techniques.

Artificial Insemination Catheter – for intra-uterine insemination AIC18 (18cm)



Key product benefits

- Flexible outer sheath with memory, can be pre-curved to aid insertion
- Smooth rounded tip to minimize trauma and maximize success rates⁸
- Similar catheter design to Wallace Embryo Transfer Catheter range, helping develop an effective technique
- Bilateral side eyes for maximum dispersion of sperm and minimal risk of blockage
- Compatible with the Wallace stylet for difficult procedures



Hub designed for ease of control



Bilateral smooth side eyes

Vacuum Pump Accessories*

Connectors

Hydrophobic filter and adapters suitable to connect with any vacuum pump or needle set.



ORIGIO Hydrophobic Filter
Part No HPFILTER
Quantity:25



ORIGIO 6mm Push Fit/
Female Adapter
Part No 30114



ORIGIO Female/Female
Adapter
Part No 30004

Tubing

Three different extension tubing kits available for all combinations of needle and pump



Vacuum tube 200 cm MM
(male/male)
Part No VTS200MM



Vacuum tube 200 cm MF
(male/female)
Part No VTS200MF



Vacuum tube 200 cm MM
(female/female)
Part No VTS200FF

*Not available in the USA

References

1. Ellen G. Wood (2000). Ultrasound-guided soft catheter embryo transfer will improve pregnancy rates within in-vitro fertilization. Human Reproduction. Vol.15 no.1, pp.107-112,2000
2. Brown J, (2016). Ultrasound versus 'clinical touch' for catheter guidance during embryo transfer in women (Review). Cochrane Database of systematic Reviews 2016, Issue 3, ART NO: CD006107
3. Sallam, H et al. (2003). Ultrasound-guided embryo transfer: a meta-analysis of randomized controlled trials. Fertility and Sterility. Vol.80, No.4, pp.1042-1046
4. Coroleu, B et al. (2000). Embryo Transfer under Ultrasound guidance improves pregnancy rates after in-vitro fertilization. Human Reproduction. Vol.15, No.3, pp.616-620.
5. Ilana B. Ressler (2013). Effects of Embryo Transfer Catheters on Endometrial Surface noted at Hysteroscopy. JMIG (2013) 20, 381-385
6. <https://pathways.nice.org.uk/pathways/fertility/embryo-transfer-strategies-during-in-vitro-fertilisation-treatment#content=view-node%3Anodes-embryo-transfer-procedure>
7. Nielsen, I.K et al. (2002). A Wallace malleable stylet for difficult embryo transfer in IVF. Acta Obstet Gynecol Scand. Vol.81, pp.133-137
8. Lavie, O et al. (1997). Ultrasonographic endometrial changes after intrauterine insemination: a comparison of two catheters. Fertility and Sterility. Vol.68, No. 4.

Product compatibility, order codes and technical information



Wallace embryo transfer catheters

Soft catheters

Technical Information	Wallace Classic / Wallace SureView
Inner catheter inner diameter	0.76mm ID
Inner catheter outer diameter	1.52mm OD
Outer sheath outer diameter	2.3mm OD
Volume of catheter not including hub (18cm catheter)	0.081 ml (81µl)
Volume of catheter not including hub (23cm catheter)	0.104ml (104µl)
Volume per cm length of catheter	0.0045ml (4.5µl)
Suggested loading volume	0.5 to 1cm = 2.25 to 4.5µl
Stylet OD	1.52mm OD
Stylet protrusion from outer sheath	2.0mm

Product compatibility and order codes:

	Wallace SureView		Wallace Classic			
	CE118 Quantity: 10 Soft 18cm Ultrasound	CE123 Quantity: 10 Soft 23cm Ultrasound	1816 Quantity: 10 Soft 18cm Classic	1816N Quantity: 10 Soft 23cm Classic	1816S Quantity: 10 Intermediate 18cm Classic	2316 Quantity: 10 Intermediate 23cm Classic
Compatible with:						
1816ST Quantity: 10 Rigid Stylet for introducing the 18cm	✓		✓		✓	
1816NST Quantity: 10 Rigid Stylet for introducing the 23cm		✓		✓		✓
CE418 Quantity: 10 Trial transfer catheter blind end (18cm) ultrasound visible	✓		✓		✓	
CE423 Quantity: 10 Trial transfer catheter blind end (23cm) ultrasound visible		✓		✓		✓
TT1816 Quantity: 10 Trial transfer catheter blind end (18cm) Classic catheter	✓		✓		✓	
TT1816N Quantity: 10 Trial transfer catheter blind end (23cm) Classic catheter		✓		✓		✓

✓ = Compatible

Wallace Sure-Pro Embryo Transfer Catheters

Supported catheters

Technical Information	Wallace Sure-Pro / Wallace Sure-Pro Ultra
Inner catheter inner diameter	0.76mm ID
Inner catheter outer diameter	1.52mm OD
Outer sheath outer diameter	2.5mm OD
Volume of catheter not including hub (23cm catheter)	0.104ml (104µl)
Volume per cm length of catheter	0.0045ml (4.5µl)
Suggested loading volume	0.5 to 1cm = 2.25 to 4.5µl
Obturator and stylet OD	1.52mm OD
Obturator and stylet protrusion from outer sheath	2.7mm

Product compatibility and order codes:

Sure-Pro

	PP623 Quantity: 10 Classic, soft 23cm Supported Single-Stage	PPB623 Quantity: 10 Classic, soft 23cm Supported Elective Two-Stage	PPS623 Quantity: 10 Classic, soft 23cm Supported Two-Stage - Difficult	PPB623X Quantity: 10 Triple Pouched Classic, soft 23cm Supported Elective Two-Stage	PPS623X Quantity: 10 Triple Pouched Classic, soft 23cm Sup- ported Two-Stage - Difficult
Obturator included within pack		✓		✓	
Stylet included within pack			✓		✓

Sure-Pro Ultra

	PE623 Quantity: 10 Sure View, soft 23cm Ultrasound Supported Single-Stage	PEB623 Quantity: 10 Sure View, soft 23cm Ultrasound Supported Elective Two-Stage	PES623 Quantity: 10 Sure View, soft 23cm Ultrasound Supported Two-Stage - Difficult	PEB623X Quantity: 10 Triple Pouched Sure View, soft 23cm Ultrasound Supported Elective Two-Stage	PES623X Quantity: 10 Triple Pouched Sure View, soft 23cm Ultrasound Supported Two-Stage - Difficult
Obturator included within pack		✓		✓	
Stylet included within pack			✓		✓



Wallace Oocyte Recovery Needles

Wallace Single Lumen Oocyte Recovery Systems

Technical Information	16g	17g	18g
Needle ID	1.24mm	1mm	0.95mm
Needle OD	1.7mm	1.42mm	1.25mm
Volume of needle not including hub	0.435ml	0.283ml	0.255ml
Volume per cm length of needle	0.012ml	0.008ml	0.007ml
Length of echogenic markings	22mm	22mm	22mm
Vacuum tubing length	480mm	480mm	480mm
Aspiration tubing ID	1.52mm	1.31mm	1.14mm

Product Compatibility and Order Codes:

Oocyte Recovery Needles	Oocyte Recovery System							
	ON1633 Quantity: 10 16g Needle 33cm	ON1733 Quantity: 10 17g Needle 33cm	ONS1633 Quantity: 10 16g Needle 33cm	ONS1733 Quantity: 10 17g Needle 33cm	ONS1833 Quantity: 10 18g Needle 33cm	ONS1633LL Quantity: 10 16g Needle 33cm	ONS1733LL Quantity: 10 17g Needle 33cm	ONS1833LL Quantity: 10 18g Needle 33cm
Compatible with:								
Fitted with 500mm aspiration tube			✓	✓	✓			
Fitted with 750mm aspiration tube			✓	✓	✓			
Fitted with 950mm aspiration tube			✓	✓	✓			
Fitted with 500mm aspiration tube with luer lock						✓	✓	✓
Fitted with 750mm aspiration tube with luer lock						✓	✓	✓
Fitted with 950mm aspiration tube with luer lock						✓	✓	✓

Note: For 950mm tubing, order codes above. For 750mm and 500mm tubing lengths, the code is preceded by -750 or -500

Wallace Dual Lumen Oocyte Recovery Systems

Technical Information	16g	17g
Needle OD	1.7mm	1.5mm
Volume of aspiration lumen not including hub	0.411 ml	0.251 ml
Volume of flushing lumen not including hub	0.044ml	0.046ml
Volume per cm length of aspiration lumen	0.011ml	0.007ml
Volume per cm length of flushing lumen	0.001ml	0.001ml
Length of echogenic markings	10mm	10mm
Vacuum tubing length	512mm	512mm
Flushing tubing length	712mm	712mm
Aspiration tubing ID	1.52mm	1.31mm

Product Compatibility and Order Codes:

	Oocyte Recovery System					
	DNS1633-950 Quantity: 10 16g Needle 33cm	DNS1633-750 Quantity: 10 16g Needle 33cm	DNS1633-500 Quantity: 10 16g Needle 33cm	DNS1733-950 Quantity: 10 17g Needle 33cm	DNS1733-750 Quantity: 10 17g Needle 33cm	DNS1733-500 Quantity: 10 17g Needle 33cm
Compatible with:						
Fitted with 500mm aspiration tube			✓			✓
Fitted with 750mm aspiration tube		✓			✓	
Fitted with 950mm aspiration tube	✓			✓		

✓ = Compatible

Wallace Intrauterine Insemination Catheters

Technical Information

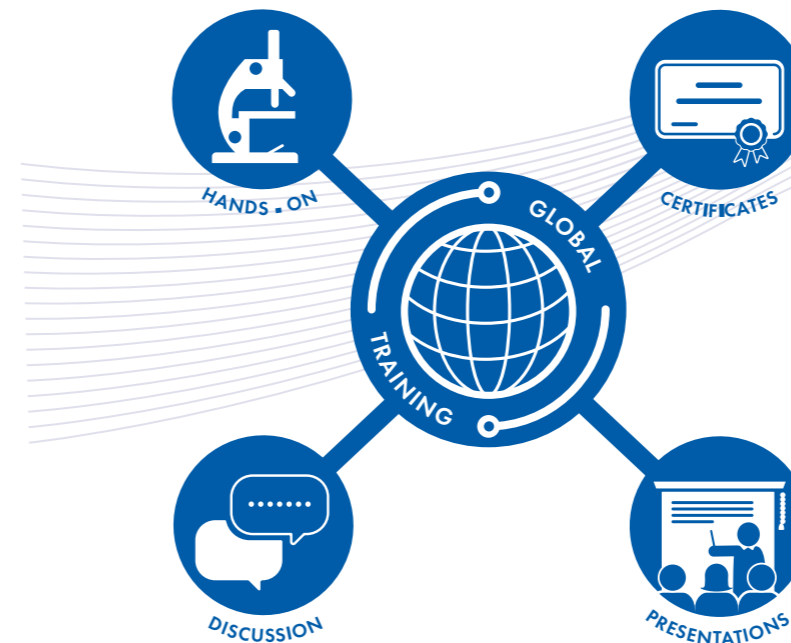
Inner catheter inner diameter	1.07mm ID
Inner catheter outer diameter	1.58mm OD
Outer sheath outer diameter	2.3mm OD
Stylet protrusion from outer sheath	2.0mm
Volume of catheter not including hub (18cm)	0.17mm
Volume per cm of catheter	0.009mm

Product Compatibility and Order Codes:

Intra-uterine Insemination

		AIC18
		Quantity: 10 - Intra-uterine Insemination catheter (18cm)
Compatible with		
1816ST	Quantity: 10 - Stylet for introducing the 18cm ET catheter	✓

Take your clinic into the future

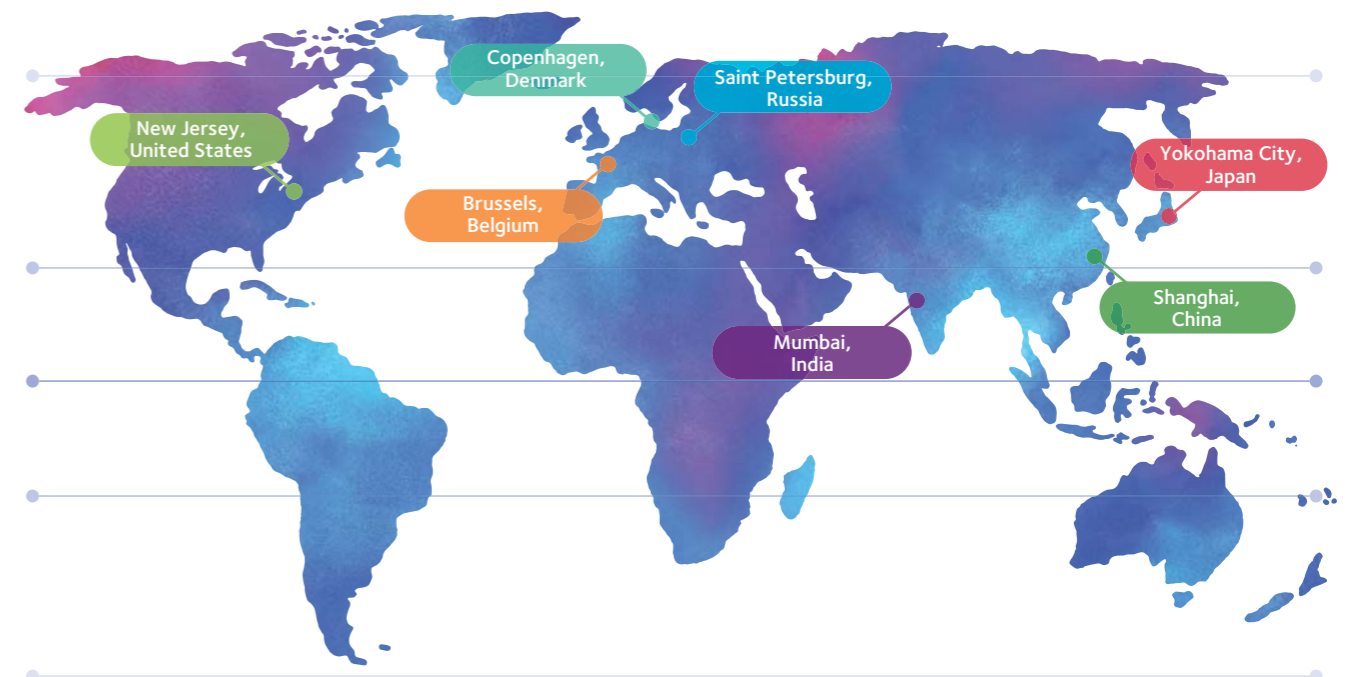


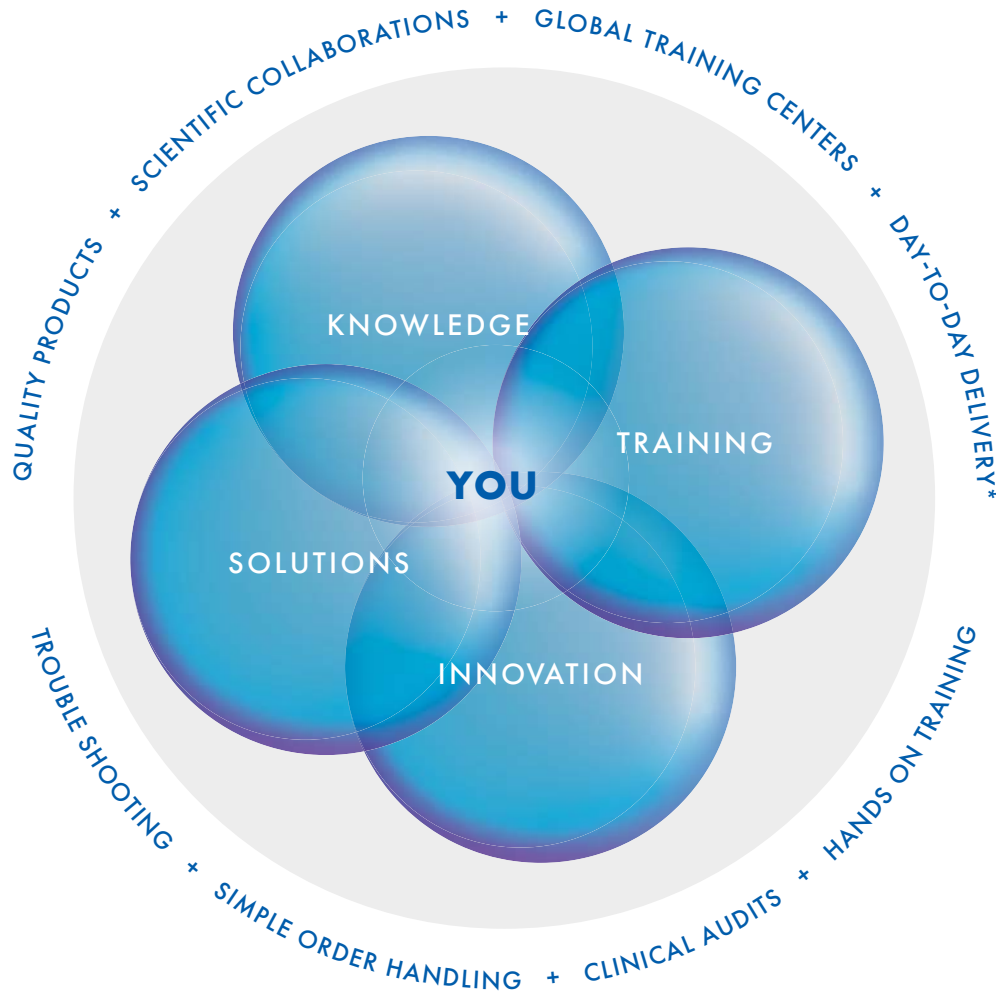
Our industry-leading ART development program is delivered from Centers of Excellence across the globe, as well as collaboratively at our external partners' training facilities, such as the Center for Reproductive Medicine at the VUB in Brussels

We offer a wide range of courses and workshops for embryologists, gynecologists, lab managers and R&D scientists at every level of experience, with hands-on expert training in breakthrough technologies and next-generation techniques.

Discover the newest technologies and treatment solutions with our theoretical and hands-on courses from embryology, ICSI, biopsy and genetics to lab design, management and study design.

Explore our global training locations





A solution as unique as your business

At CooperSurgical, we partner with you to drive clinical efficiency

When you partner with CooperSurgical you become part of a truly global network of clinical experts ready to support you with highly specialized solutions, both for individual clinics and across large organizations. By providing you with optimal products, services and training our aim is to offer you the best possible support to drive the efficiency of your clinic – and achieve the best results.