



K-SYSTEMS® EQUIPMENT

# SignipHy™ pH Monitoring

Continuous pH monitoring



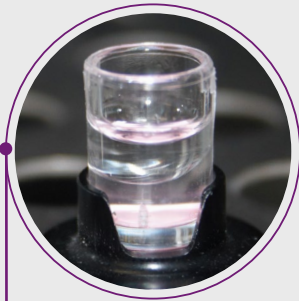
# SignipHy pH monitoring

## Key features:

Continuous pH monitoring (reading every 30 min) on K-Systems incubators

- Accuracy ( $\pm 0.05$  in a range of pH 7.00 – 7.60)
- Single-use sensor probe for up to 7 days of pH readings
- Easy to install and use

- Not invasive – no media or sample contact
- No user calibration required – weekly check and alignment only
- Easy to align (no buffers, no hassles)
- Separate data logging of pH and user alarms



### sv2 sensor

- One per incubator
- Fluorescent membrane on the base
- 100  $\mu$ L of media + 150  $\mu$ L of oil
- Factory certified
- Up to 12 months shelf life
- To be replaced every week



### TrakPod®

- One per incubator
- USB interface
- Configurable measurement frequency (1 sec every 30 min as default)

#### The solution fits...

|                              |        |
|------------------------------|--------|
| K-Systems G210 InviCell Plus | K60000 |
|------------------------------|--------|



### qc2 alignment tool

- Provides a known and stable fluorescent signal
- For weekly system alignment
- One per clinic – covers all incubators in the clinic
- To be replaced every year

### TrakStation®

- Connect up to 8 incubators / TrakPods
- Touch screen display
- Data logging of pH and user alarms

#### SignipHy pH monitoring

|   |           |
|---|-----------|
| SignipHy TrakPod®                           | SS-600018 |
| SignipHy TrakStation®                       | SS-600019 |
| SignipHy qc2 alignment tool                 | SS-400020 |
| SignipHy sv2 sensor – consumables (10 pack) | SS-400019 |

TrakPod and TrakStation are registered trademarks of Blood Cell Storage, Inc. K-Systems and SignipHy are trademarks of CooperSurgical, Inc.