

BT37 Mark II

For consistent  
humidified culturing



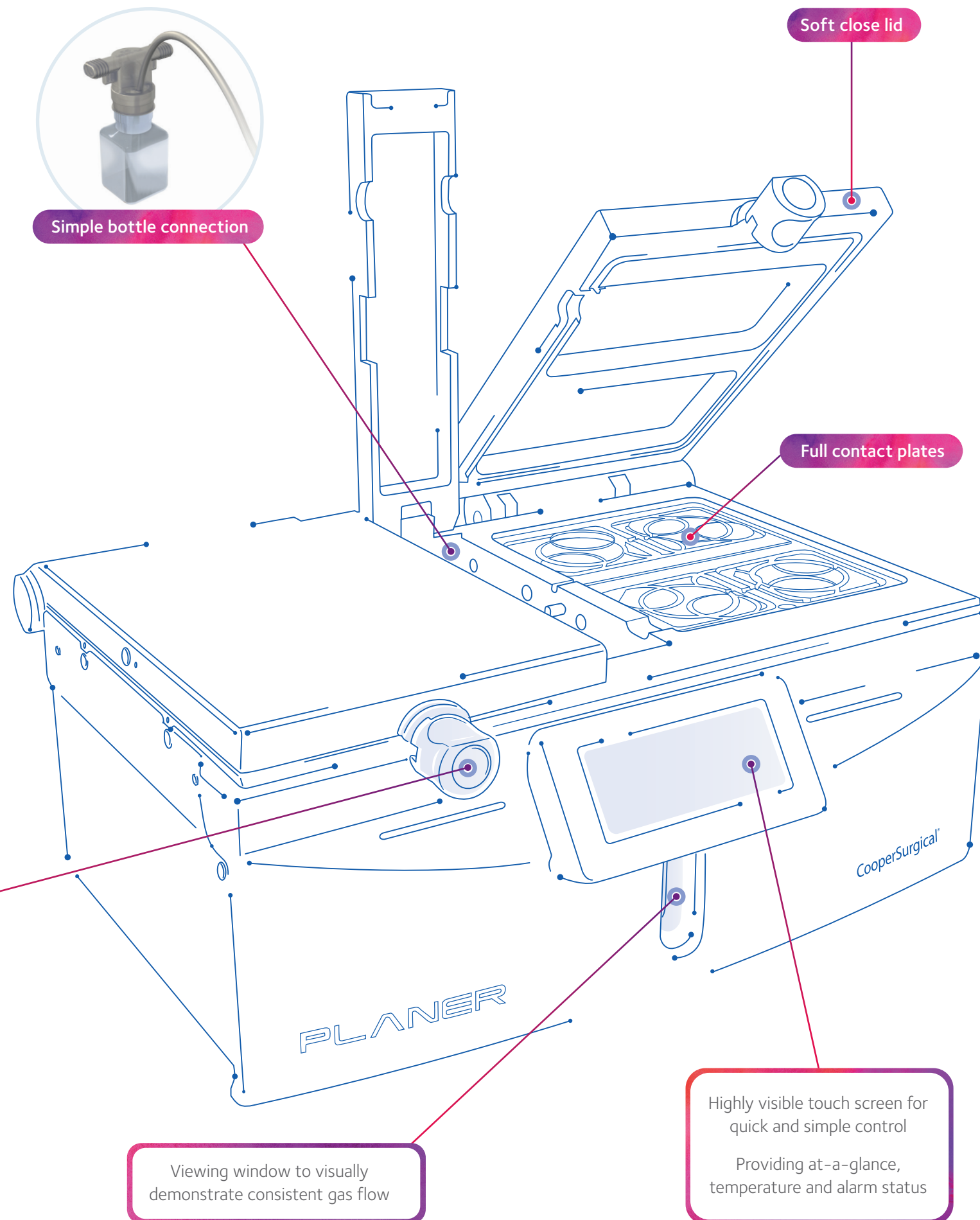
CooperSurgical®  
Fertility Solutions

# Designed to protect and care for every embryo

Providing consistency in temperature and pH control combined with ergonomic, precision-engineered functionality, the BT37 Mark II protects and cares for your embryos and gametes.

The BT37 Mark II keeps every vital parameter – temperature, CO<sub>2</sub> and reduced O<sub>2</sub> – consistent. It is compatible with the same remote monitoring systems as the previous generation. Its soft close lid and ergonomically designed twist-locks give you improved chamber access. The BT37 Mark II is simpler than ever to use, with easy-change gas bottles.

Offering multiple functional improvements, great design and effective homeostatic controls, you can see at a glance the temperature and alarm status and can change settings at a touch. The BT37 Mark II shows our commitment to care throughout every patient cycle.



## Emergency Power

- Integrated 2hr battery backup

## Humidification system

- Works with premixed gas
- Minimal tubing to mitigate kinking and gas reduction
- Rapid recovery to optimal temperature, gas and humidity
- Improved user-friendly bottle design
- Easier bottle replacement

## Alarm functions

- Event/alarm log on display
- Humidification system alarm
- Alarms can be muted during servicing
- Bottle replacement reminder alarm

## Remote monitoring

- Connectivity to clinic network
- Ready for remote monitoring

## Full contact plates

- Consistent heat distribution
- Absolute control to 0.1°C
- Seven point temperature control
- Large range of culture dish sizes accepted

## Service friendly

- Easy hatch opening for battery replacement
- Easy filter replacement/cover removal
- Service is sold separately and recommended

## Password protection

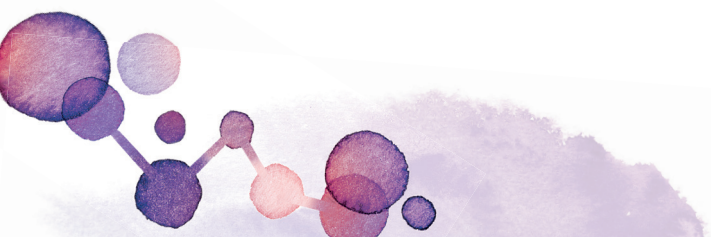
- Prevents accidental power off
- Prevents unauthorised parameter change



Ergonomic handle design

Viewing window to visually demonstrate consistent gas flow

Highly visible touch screen for quick and simple control  
Providing at-a-glance, temperature and alarm status



# Technical Specification

The BT37 Mark II has been developed in conjunction with PLANER™; all trademarks acknowledged. Specifications may change.

System		Capacity	
Dimensions	435 mm wide x 330 mm deep x 185 mm high	Dishes per chamber	4 x Nunc® 4 well Petri dishes 10 x Nunc 30 mm Petri dishes 4 x Minitub 5 well Petri dishes 4 x Falcon® 60 mm Petri dishes
Weight	17 kg		
Storage temperature	-10°C to +50°C		
Storage humidity	5% to 95% relative humidity non-condensing		
Storage special instructions	Recharge every 4 months by connecting to the mains power supply for 24 hours		

Control	
Temperature control range	(ambient + 5°C) to (ambient + 20°C) 40°C max.
Temperature measurement accuracy	± 0.2°C
Temperature control accuracy	± 0.1°C measured after any transient effects due to set-point changes have subsided
Flow control range	0 mL/minute to 900 mL/minute. Normalized to 0°C, 50% RH and 1 bar
Flow accuracy	The greater of ± 10% or ± 3 ml/minute
Flow control accuracy	The greater of ± 5% or ± 2 ml/minute measured after any transient effects due to set-point changes have subsided

Humidifier bottle and filter		
Item	Order Code	Manufacturer
Bottle pack of 6 (incl. Syringe Filter) – only BT37 Mark II	AY200246	Planer Limited
Bottle pack of 6 (incl. Syringe Filter) – BT37 Mark I (may be used for Mark II as well)	AY102295	Planer Limited

Gas supply	
Gas supply	Premixed gas. Typically 6% CO <sub>2</sub> , 5% O <sub>2</sub> , 89% N <sub>2</sub>
Supply pressure	1.5 ± 0.15 bar
Connectors	SWAGELOK 1/4" tube fitting

Monitoring		Power	
Feature	Controller	Power requirements	100 – 240 V~, 50/60Hz, 2 A
Local area network (LAN)	10 Base T Ethernet – RJ45 shielded Modbus-TCP-IP protocol		
Independent temperature monitoring	Independent sensors can be fitted to the monitoring ports Recommended sensor type: PT100 Class A to EN60751 Maximum diameter: 2.51 mm		

Contact your service provider for more details and available options.